



SCANTOOL

Industrivej 3-9
DK-9460 Brovst
Tlf.: +45 9823 6088
Fax: +45 9823 6144



SCANSLIB SCANGRIND



Telefoon (0317) 619 108

www.serviceteam.nl

SERVICE TEAM NEDERLAND

★ bedrijfskoeling ★ grootkeukens ★ witech catering equipment

Wet Grinder - Reversible – High quality
Nass-Schleifer – Reversibel – Spitzenqualität

MANUAL
BEDIENUNGSANLEITUNG
INSTRUCTIONS
DOCUMENTATION

INSTRUCTIONS FOR USE

SCANGRIND WET GRINDER

Thank you for choosing a SCANTOOL product. The SCANGRIND wet grinder is a Danish quality product and for you to obtain the best results from using the grinder please read the following instructions carefully.

OPERATING THE GRINDER

Before starting the motor check that:

1. All adjustments and checks are made with the machine disconnected from the power supply.
2. Stone can be revolved freely by hand
3. The tool rest is in position, adjusted to within 3 mm. (1/8") of the periphery face of the stone, and firmly secured.

WHEN STARTING AND USING THE MACHINE

- 1 Fill the watercontainer up to 1/2 capacity.
- 2 Plug into prescribed power supply.
- 3 Press switch for required direction of rotation.
- 4 Adjust the tool rest to obtain correct grinding angle.
- 5 Check that the stone, especially a new replacement stone is in sound condition by allowing the machine to run up to maximum speed and remain there for at least 30 seconds before it is put into use.
- 6 Allow the machine to run up to full speed before applying the workpiece to be grinded.
- 7 Feed the workpiece smoothly onto the grinding stone and avoid harsh pressure and "bumping" into the wheel.
- 8 Always apply light but firm pressure, and allow the stone to rotate at maximum possible speed.
- 9 Scangrind can be used max. 30 minutes/hour.
- 10 Do not arrest the stone by applying pressure to it at the conclusion of the grinding operation. Always allow the machine to run down freely to stop.
- 11 Once a year, place a few drops of oil on the selflubricating wheel bearings (lubricating holes are located in the middle of each bearing block).
- 12 Unplug before cleaning, and empty water over the rear of the machine.

CHANGING THE STONE (Look at the instruction at the bottom of the machine)

- 1) Check the stone to ensure that the outside diameter does not exceed the recommended size, and that the bore is correct.
- 2) Unscrew the two outermost screws in each bearing block, so that these can be removed (the screws in the middle is only for lubrication). Remove the shaft with fitted parts and place it resting on the toothed wheel. Remove brass bearing, v-ring, two plastic nuts and a plastic flange. The stone can now be removed and new fitted.
- 3) When mounting the stone take care to tighten the just enough to hold the wheel firmly. Avoid excessive clamping pressure.
- 4) After having mounted the stone, start the machine and check that the stone runs smoothly. If not loosen the two nuts lightly and turn the stone a little. Tighten the nuts again and check the running. This procedure is repeated until the stone runs smoothly.

GENERAL

The machine is rated for maximum twenty minutes continuous operation. After twenty minutes of continuous operation the machine must have a break for at least the same number of minutes. The specially developed wet stone is designed to stay in water, but it is recommended to empty the water container as this helps keeping the machine clean.

The machine has noise level below 70 Dba.

STONE CARE

Stone spare grinding stones flat on a firm surface with a layer of compressible material between the stones and the storage surface. Similar material should be placed between stones when a number are being stored. As the grinding stone is used it will wear. It is recommended that the stone is replaced when the diameter has been reproduced approximately 25% below the original size (e.g. 200 mm to 150 mm).

Wear on the stone can cause eccentricity leading to machine vibration and "bouncing" of the workpiece. To obtain balance and efficient grinding the stone must be redressed. A piece of hardened steel can be used to redress the stone. The stone must be completely dry when redressing. The hardened piece of steel is held on the tool rest and pushed slowly towards the stone while the stone is rotating. This procedure is continued until full contact with the stone is obtained.

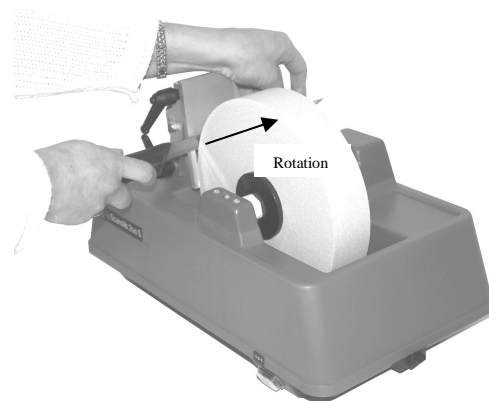
GRINDSTONES:

Different grindstones are available for different purposes: - Standard grey for general purpose grinding.

- White or pink for fine grinding of knives, etc.

- Green carbide for very hard metals, glass, stone, etc.

GRINDING GUIDE FOR PRECISION ANGLES



NOTE! Before you start grinding make sure the stone rotates in the right direction (pic. 2)

- 1) Find the requested grinding angle on the grinding guide.
- 2) Place the grinding guide on the grinding wheel.
- 3) Adjust the tool rest in vertical position and push the tool rest up against the grinding guide. Tighten up the thumb screws. Approximate distance to the grinding wheel: 1 ,5 mm
- 4) Place the tool that needs sharpening on the tool rest and pull it from left towards right with a light pressure on the grinding wheel.

NOTE! To obtain correct grinding angle please hold the tool towards the tool rest during grinding.

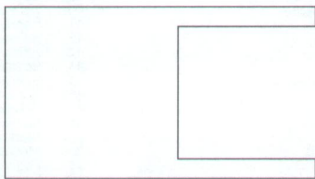
GUIDE PLATE

This brilliantly simple precision alu tool rest is now standard on all wet grinders. Makes knife sharpening so easy both edges.

HOW TO USE WHEN GRINDING ON TOP OF THE WETSTONE.

For best results, the wet stone should turn towards the knife. Angle the tool rest so that the knife supports are at the uppermost part of the stone. Draw the knife lightly and smoothly across the stone, holding it flat on the tool rest. Only light pressure is required for a perfect finish. Turn the knife over, end for end, and grind the opposite face, regularly checking the edge for even grinding. Finally, remove any microscopic burr with the polish wheel (200-S) or a small slip stone.

FIG 1



ON-OFF-ON AFBRYDER
reversibel

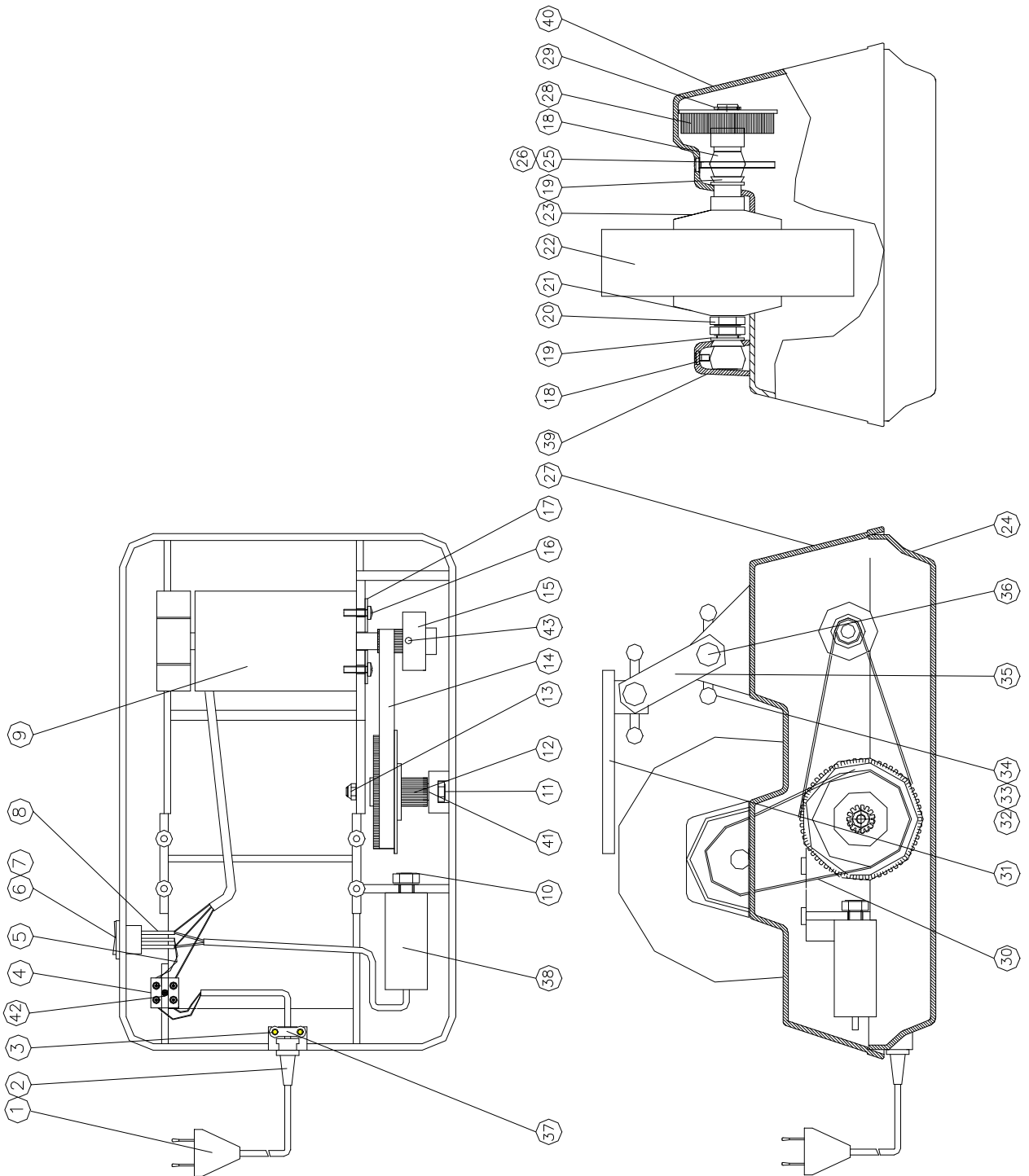


2 YEAR WARRANTY

If within two year of purchase this machine supplied by SCANTOOL A/S becomes defective due to faulty materials or workmanship, we guarantee to repair or replace the machine or the defective part or parts free of charge provided that:

- 1) The product is returned complete to one of our service branches or official service agents.
- 2) The product has not been misused or carelessly handled and in particular has not been used in a manner contrary to the operating instructions.
- 3) Repairs has not been attempted by persons other than our own service staff or the staff of our official service agents.
- 4) Documentary proof of purchase date is produced when the goods are handled in or sent in for repair.

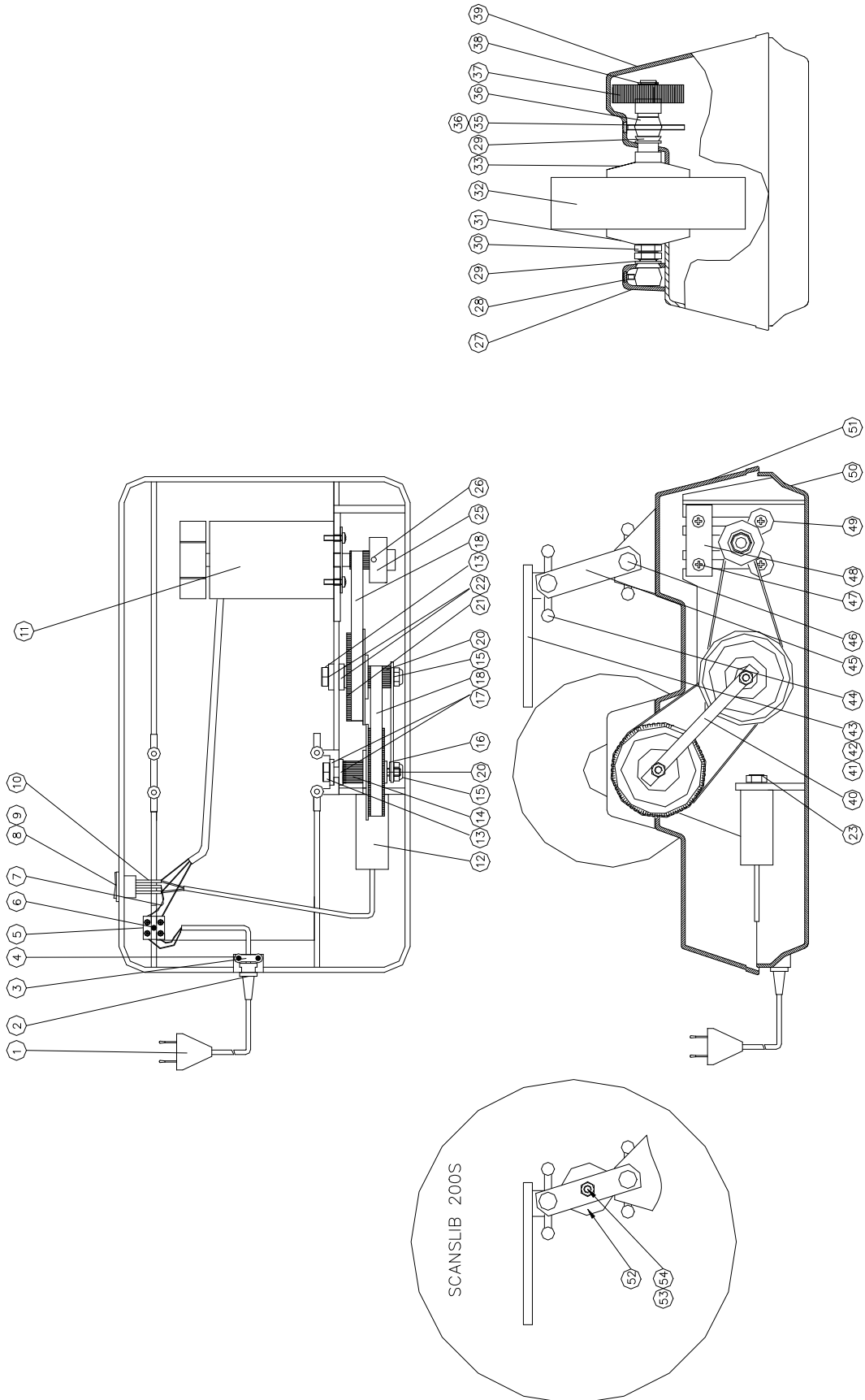
Reservedelstegning af Scanslib 150/Split drawing of Scanslib 150



Reservedelsliste til Scanslib 150/ Spare parts list for Scanslib 150

Pos	Benævnelse	Beschreibung	Description	Item no
1	Kabel	Kabel	Cable	0231375
2	Kabelafplaster	Kabelisolierung	Cable isolation	0231330
3	Pl. skrue M2,9x9,5	Schraube M2,9x9,5	Screw M2,9x9,5	0231371
4	Kronmuffe	Hülse	Sleeve	0231332
5	Ledning 230V	Kabel	Cable	0231329
6	Afbryder	Schalter	Switch	0231328
7	Hætte for afbryder	Schutzabdeckung für Schalter	Protection cover f/ switch	0231323
8	Fladstik	Flachstecker	Flat plug	0231366
9	Motor 1x230V	Motor 1x230V	Motor 1x230V	0231315
10	Møtrik M8	Mutter M8	Nut M8	0231350
11	Stålsætbolt M6x55	Schraube M6x55	Screw M6x55	9231338
12	Tandremshjul 44 T	Zahnriemenrad 44T	Cog-beltwheel 44T	0231110
13	Låsemøtrik M6	Mutter M6	Nut M6	0951406
14	Tandrem 130XL	Zahnriemen 130XL	Toothed belt 130XL	0231221
15	Motortandhjul	Angetriebenes Zahnrad	Geared motor wheel	0231211
16	Maskinskrue M4x14	Schraube M4x14	Screw M4x14	0231196
17	Holdeplade for motor	Halteplatte für Motor	Retaining plate f/motor	0231365
18	Maskinskrue M4x6	Schraube M4x6	Screw M4x6	0231342
19	V-ring	V-Ring	V-ring	0231324
20	PG-11 møtrik	Mutter PG 11	Nut PG 11	0231348
21	Flange	Ring	Flange	0231307
22	Vådsten 150x40x20	Nass-Stein 150x40x20	Wetstone 150x40x20	0209110
23	Aksel m/flange	Achse mit Ring	Axle w/ flange	0231106
24	Kabinet	Gehäuse	Cabinet	0231101
25	Maskinskrue M4x45	Schraube M4x45	Screw M4x45	0231369
26	Fjederskive 4mm	Federscheibe 4mm	Springdisk 4mm	0737658
27	Bund Scanslib 150	Unterteil für Scanslib 150	Bottom f/Scanslib 150	0231102
28	Tandremshjul 35 T	Zahnriemenantrieb 35T	Toothed belt drive 35T	0231108
29	Seegerring udv. 12mm	Seegerring 12mm	Seegerring 12mm	0231355
30	Tandrem 110 XL	Zahnriemen 110XL	Toothed belt 110XL	0231121
31	Slibeanlæg alu.	Werkzeugaufgabe Alu	Tool rest alu.	0231318
32	Knebelmøtrik M6	Handgriff M6	Handgrib M6	0924687
33	Fjeder	Feder	Spring	0411124
34	Polyamid skive ø6	Polyamid-Scheibe ø6	Polyamid disk ø6	0231356
35	Stang alu.	Alu- Griff	Alu. bar	0231114
36	Bræddebolt M6x60	Abdeckung M6x60	Cover M6x60	0207741
37	Aflastningbøjle	Löseklamme	Relief clamp	0231368
38	Kondensator	Kondensator	Condensator	1461506
39	Lejedæksel lille	Abdeckung klein	Cover small	0231304
40	Lejedæksel stor	Abdeckung groß	Cover big	0231305
41	Akselrør f/tandhjul	Achsgehäuse für Zahnrad	Axle housing f/ gear wheel	0232334
42	Pladeskrue M2,9x19	Schraube M2,9x19	Screw M2,9x19	0231341
43	Pinolskrue M4x12	Schraube M4x12	Screw M4x12	0231364

Reservedelstepping af Scanslib 200 (S) / Split drawing of Scanslib 200 (S)



**Reservedelsliste til Scanslib 200 (S)/ Spare parts list for Sanslib 200 (S)**

Pos	Benævnelse	Beschreibung	Description	Item no
1	Kabel	Kabel	Cabel	0231375
2	Kabelafaster	Kabelisolierung	Cable isolation	0231330
3	Aflastningbøjle	Löseklamme	Relief clamp	0231368
4	Pl.skrue M2,9x9,5	Schraube M2,9x9,5	Screw M2,9x9,5	0231371
5	Kronmuffe	Hülse	Sleeve	0231332
6	Pl.skrue M2,9x19	Schraube M2,9x19	Screw M2,9x19	0231341
7	Ledning 230V	Kabel 230V	Cabel 230V	0231329
8	Hætte for afbryder	Schutzabdeckung für Schalter	Protection cover f/switch	0231323
9	Afbryder	Schalter	Switch	0231328
10	Fladstik	Flachstecker	Flat plug	0231366
11	Motor 1x230V	Motor 1x230V	Motor 1x230V	0231315
12	Kondensator	Kondensator	Condensator	1461506
13	Stålsætbolt M6x55	Schraube M6x55	Screw M6x55	9231338
14	Tandrem/s/tandhjul 44T	Zahnriemenrad/Zahnrad 44T	Cog-beltwheel/Geared wheel 44T	0231270
15	Låsemøtrik M6	Mutter M6	Nut M6	0951406
16	Facetskive 6mm	Scheibe 6mm	Disk 6mm	0231346
17	Plade f/200 60x20x4	Platte 60x20x4	Plate 60x20x4	0200867
18	Tandrem 130XL	Zahnriemenrad 130XL	Cog-beltwheel 130XL	0231221
20	Akselrør f/tandhjul	Achsgehäuse für Zahnrad	Axle housing f/ gear wheel	0232334
21	Tandhjul 44T	Zahnrad 44T	Geared wheel 44T	0231210
22	Plade f/200 60x20x2	Platte 60x20x2	Plate 60x20x2	0231273
23	Møtrik M8	Mutter M8	Nut M8	0231350
25	Motortandhjul f/200	Angetriebenes Zahnrad	Geared motor wheel	0231211
26	Pinolskrue M4x12	Schraube M4x12	Screw M4x12	0231364
27	Lejedæksel lille	Abdeckung klein	Cover small	0231304
28	Maskinskrue M4x6	Schraube M4x6	Screw M4x6	0231342
29	V-ring	V-Ring	V-ring	0231324
30	PG-11 møtrik	Mutter PG -11	Nut PG-11	0231348
31	Flange	Ring	Flange	0231307
32	Vådsten ø200x45x20	Nass-Stein ø200x45x20	Wetstone ø200x45x20	0209440
33	Aksel	Achse	Axle	0231206
35	Maskinskrue M4x45	Schraube M4x45	Screw M4x45	0231369
36	Fjederskive 4mm	Federscheibe 4mm	Springdisk 4mm	0737658
37	Tandhjul 35T	Zahnrad 35T	Gear wheel 35T	0231208
38	Seegerring udv. 12mm	Seegerring 12mm	Seegerring 12mm	0231355
39	Lejedæksel stort	Abdeckung groß	Cover big	0231305
40	Plade 113x17x2	Platte 113x17x2	Plate 113x17x2	0231274
41	Slibeanlæg alu.	Werkzeugaufgabe Alu	Tool rest alu.	0231318
42	Knebelmøtrik M6	Handgriff M6	Handgrib M6	0924687
43	Fjeder	Feder	Sping	0411124
44	Polyamid skive ø6	Polyamid-Scheibe ø6	Polyamid disk ø6	0231356
45	Anlægsstang alu.	Alu-Scheibe	Alu. bar	0231214
46	Bræddebolt M6x60	Abdeckung M6x60	Cover M6x60	0207941
47	Maskinskrue M4x12	Schraube M4x12	Skrew M4x12	0231359
48	Plade 60x20x1,5	Platte 60x20x1,5	Plate 60x20x1,5	0231365
48	Skærmskive 4mm	Scheibe 4mm	Disk 4mm	0231326
50	Bund f/200	Unterteil für Scanslib 200(S)	Bottum f/Scanslib 200(S)	0231202
51	Kabinet f/200	Gehäuse für Scanslib 200(S)	Cabinet f/Scanslib 200 (S)	0231201
52	Gummirulle Ø36 (200S)	Führungsplatte Ø36 (200S)	Guide Plate Ø36 (200S)	0200851
53	Låsemøtrik M6 (200S)	Mutter M6 (200S)	Nut M6 (200S)	0951406
54	Stålbolt M6x55 (200S)	Schraube M6x55 (200S)	Skrew M6x55 (200S)	9231338